



A long time ago in Germany, a mother was busily cleaning the house for Christmas. All the house spiders fled upstairs to escape the broom.

It was late on Christmas eve when the house became quiet again and the spiders slowly crept downstairs for a peek. To their delight a beautiful tree had been placed in a corner of the room and they scurried over to it and up the trunk.

In their excitement they climbed all over the branches leaving trails of dusty grey spider webs. When Santa came with the gifts for the children, he smiled to see how happy the spiders were but knew how upset the mother would be to see the tree covered in dusty webs.

So he turned the webs to silver and gold. The tree sparkled and shimmered and was even more beautiful than before. And that is why we have tinsel on our tree and why every tree should have a Christmas spider on its branches.

NEW ZEALAND Creative stitch and craft Free Chart

Instructions by:

Jane van Keulen

Textile Artist/Educator

10E Sefton St,
Belfast, Christchurch 8005
Ph (03) 323 7737
Rob.Jane.v.k@xtra.co.nz

Christmas Spiders

A group of these spiders as a very special Christmas display will create lots of interest this year. Or you could give them as gifts with a difference. I found them quite addictive to make once I got going. Perhaps this will solve the question of what to give to the person who has everything. Include a copy of the delightful story to go with them. Have fun.

MATERIALS:

For the Crystal Spiders

- [BD2495218](#) Beadery craft wire - 28 gauge Silver
- [DR1921-13](#) 10mm Silver Bell Caps (13 per pack)
- [DR1951-19](#) #11 Clear Seed Beads 10gm tube
- [DR1961-13](#) Designer Glass Beads Crystal
- [SWWC11](#) Jewellery Cutters

For the Ebony Spiders

- [BD2495210](#) Beadery craft wire - 28 gauge Black
- [DR1921-13](#) 10mm Silver Bell Caps (13 per pack)
- [DR1951-59](#) #11 Tiger Eye Seed Beads 10gm tube
- [DR1961-10](#) Designer Glass Beads Black/Grey
- [SWWC11](#) Jewellery Cutters

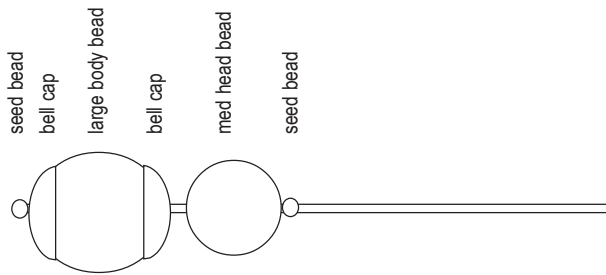
CONSTRUCTION of BODY

I made a collection of spiders using combinations of beads & wire to create each one distinctly different from the next but all using the same method of construction. Use the wire and bead selection from either the Crystal or the Ebony Spiders.

- Cut 1 metre of wire . Colour of your choice.
- Thread 1 of the seed beads onto the wire.
- Place it in the centre of the wire & fold the wire in half.

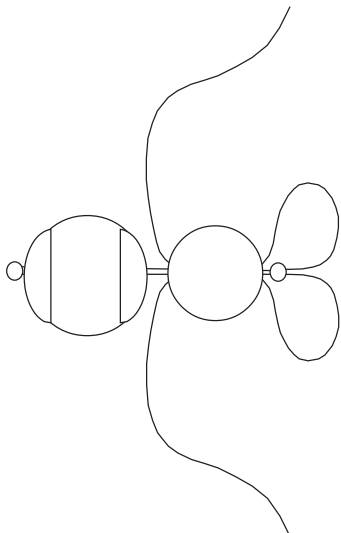


- thread 1 of the bell caps, a large bead of your choice, another bell cap a bead of your choice for the spiders head and then a seed bead the same colour as the initial bead onto the folded wire in this order. These beads & findings are all threaded onto the double wire.



- The double wire that all the beads have been threaded on now needs to be separated and threaded back through the head bead and out between the head bead and the second bell cap. Thread each piece of the wire through individually & pull to firm up the spiders body.

- It is necessary to leave a small gap between the second bell cap and the head so that the legs (all eight of them) can fit into this space.



CONSTRUCTION of LEGS

- The legs are now worked on each side of the body.
- each one is worked in the same way.
- Work four on one side & then four on the other.
- Thread approx 20 seed beads - colour of you choice - onto the wire. I varied the number of beads on each leg to give a more realistic look. Some were 18 beads , others 23.
- Turn the wire, miss the first bead and thread the wire back through the rest of leg beads .
- Wrap the wire around the double wire running through the centre of the body between the second bell cap and the head bead.
- Continue with the other 3 legs on this side of the body.
- When you have completed all four on one side wrap the wire 2 or 3 times as before to secure it and cut it off close to the body
- repeat the 4 legs on the other side of the body to match secure the wire again & cut off the excess.

