

Free Chart

Assisi Pincushion



ZWEIGART®

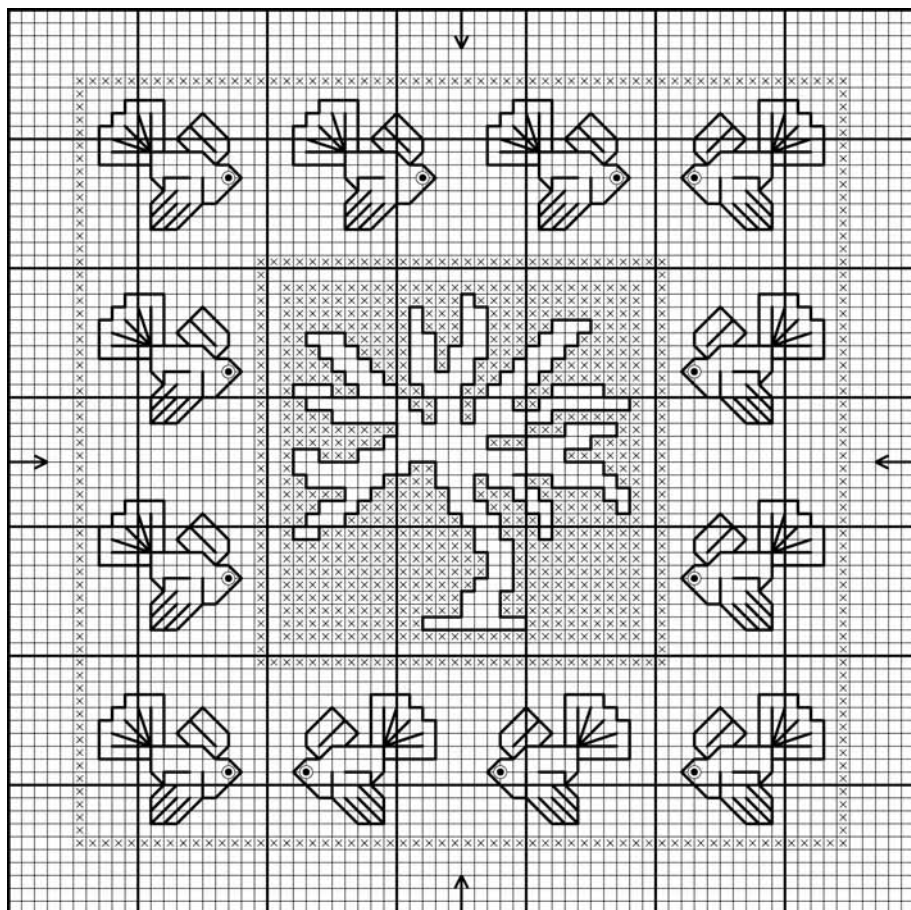
THE needlework fabric™

Fantails

Assisi is a type of embroidery worked in colours on linen in which the design is left bare and outlined with Back stitch in a dark colour against a Cross stitch ground in a light shade. In this design variegated stranded cotton is used for the background for an interesting effect.



Design size: Cashel - 9.5 x 9.5cm. Design size: Belfast - 10.9 x 10.9cm.



Materials:

2 x 20cm squares of Zweigart linen in either:
28ct Cashel ZW3281.633 Mint Green
32ct Belfast ZW3609.633 Mint Green

DMC Stranded Cotton

✕ 122	Variegated Olive Green
▤ 986	Forest Green - vy dk
● Bead	Black seed beads for eyes

DMC Tapestry needle size 24
DMC Tapestry needle size 28 (for beads)

Stitch the outlines in Back stitch with one strand of 986.

Stitch symbols as Cross Stitch with 2 strands of cotton. Full instructions for stitching Cross stitch with variegated cotton are on the next page.

© 2001 CraftCo Limited.
May not be re-produced for sale or printed in any publication without the express permission of CraftCo Limited.



Cross Stitch with DMC Variegated Stranded Cotton

INSTRUCTIONS

Zig-zag the edges of one of the pieces of fabric. Stitch symbols as Cross stitch with 2 strands. Stitch lines as Back stitch with 2 strands. Stitch beads with 2 strands of matching DMC Stranded cotton.

DMC VARIEGATED THREADS

Working with DMC variegated threads can give you some lovely subtle shaded effects but for best results you do need to work Cross Stitch in a slightly different method.

Preparing the threads:

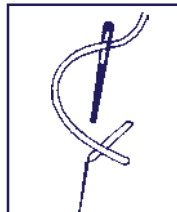
You need to be able to start an area of stitching in the same intensity of thread as the last one you finished with (light, medium or dark). It makes it easier to do this if you cut all the skein of thread into lengths first. Start by cutting the threads at the midpoint of the lightest area all down the skein. Then cut the lengths again at the midpoint of the darkest area. Your threads will now be approximately 85cm.



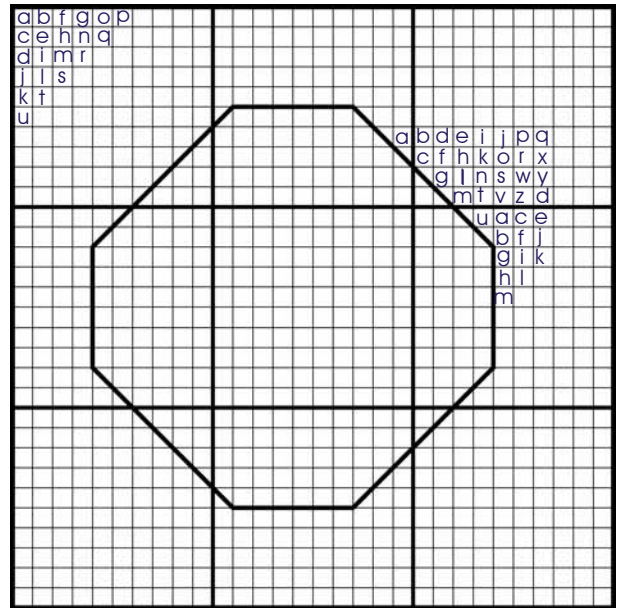
Now cut these threads in half again so you will have two groups of threads, light/medium and medium/dark. The order of working will be: light/medium, medium/dark, dark/medium, medium/light.

VERY IMPORTANT

Each Cross stitch should be completed in both directions before moving on to the next stitch. If you stitch a full row in one direction then come back you will have light threads on top of dark or vice versa. For areas of background it could work better to stitch with a 'palate'



approach of stitching a 'block' rather than a whole line. Where there are curves, take your stitching around the shape of the curve so that the shading enhances the shape. You could stitch blocks at random or try following the alphabetical stitch sequence on the graph below.



TO MAKE UP

Trim both pieces of fabric to 15cm square. Zig-zag the edges then with right sides together sew around the edges with 1cm seam allowance. Leave a small opening for turning and stuffing with a small amount of fibre fill.

Other designs available in this series.

