

  
**ZWEIGART®**  
Needle Art

## MODEL 6 Christmas Dove

Finished Size: 5.5 x 8.5cm

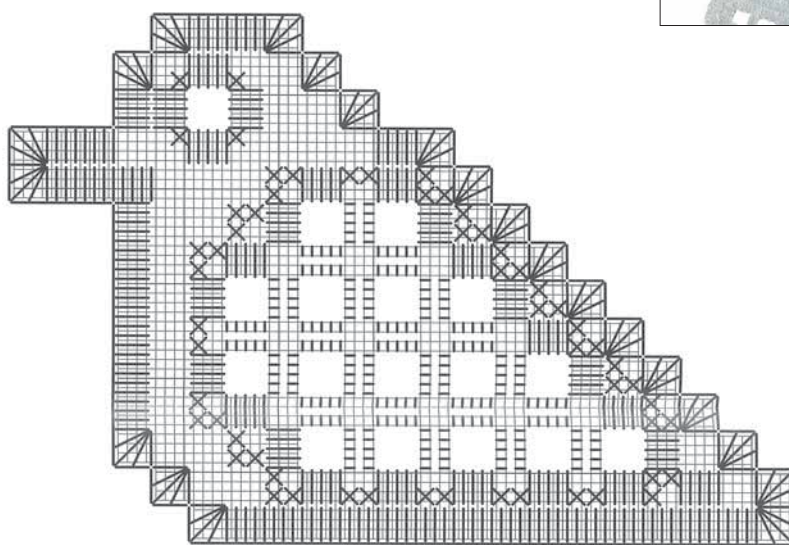
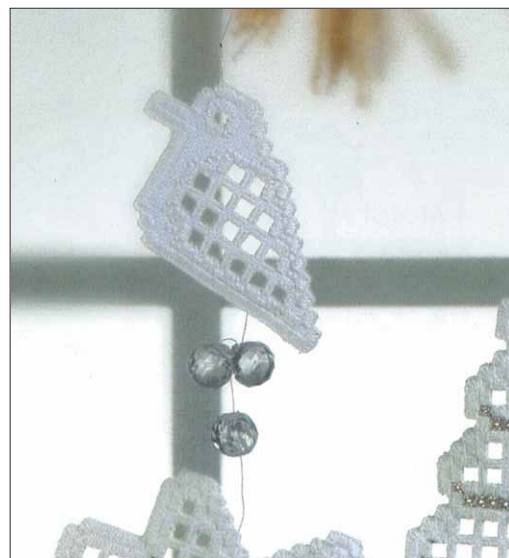
Fabric required: 20 x 20cm

Zweigart 25ct Lugana ZW3835.100 White

Threads:

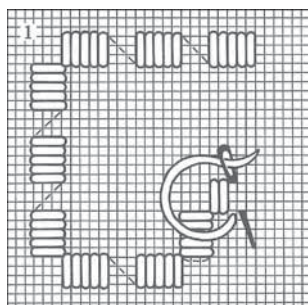
DMC Pearl 8 W5200

DMC Stranded Cotton W5200



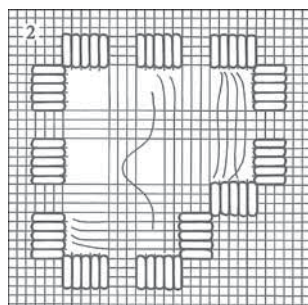
# Just Count to 5

## Basic Hardanger instructions.



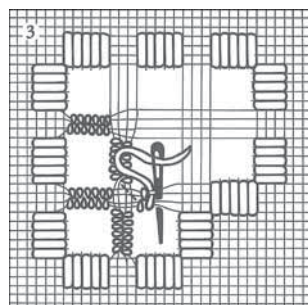
### 1. Kloster Blocks

- A Kloster block consists of 5 Satin stitches worked over 4 threads of fabric and can be worked horizontally or vertically.
- Kloster blocks form the framework for the openwork embroidery.
- *Do not cut any threads until Kloster blocks are completed.*
- To start stitching, leave a small tail of thread and work 2 Back stitches under where the first Kloster block will be stitched. Work the first Kloster block then trim the tail of the thread.
- There should be a single slanting thread between the blocks on the wrong side.
- To secure the thread at the end of the work, run it behind the Kloster block and trim the tail.



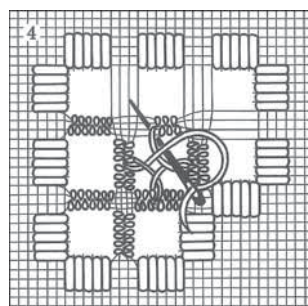
### 2. Withdrawing Threads

- Work all Kloster blocks before cutting threads. Make sure that you have counted correctly and that Kloster blocks are opposite each other.
- Cut threads close to a Kloster block and then cut the same 4 threads next to the Kloster block opposite (*the threads must be secured by Kloster blocks at each end*).
- Cut only threads that run in the same direction as the Satin stitches (Kloster blocks) themselves.
- Draw the threads out with a pair of tweezers. First draw out the threads running in one direction and the crossing threads.



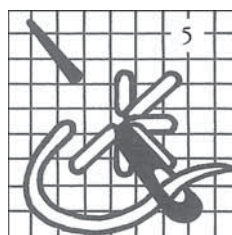
### 3. Woven Bars

- Bring the needle up in the centre of the group of fabric threads.
- Weave the threads in a figure eight with the needle going down in the centre. Weave about 7 or 8 stitches each side to cover all the exposed fabric.

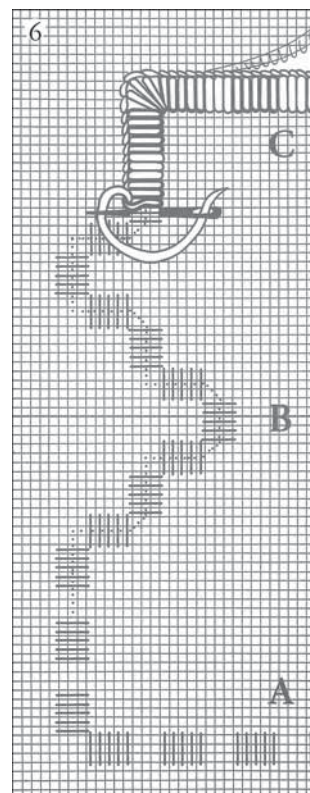


### 4. Woven Bars with Doves Eyes

- Weave along three and a half bars.
- Make a Doves eye as shown in the diagram.
- Complete the fourth bar.



### 5. Algerian Eyelet



### 5. Padded Buttonhole Stitch Edge

This is worked in three phases:

**A:** Work 5 Satin stitches over 4 fabric threads as you would for a Kloster block using 2 strands of Stranded Cotton.

**B:** Machine stitch over the centre of these stitches with a tiny (1mm) straight stitch setting.

**C:** Then work Buttonhole stitch over the Satin stitch padding. Work 5 stitches into 1 hole at corners. When the entire project is finished, very carefully trim fabric back close to the Buttonhole edging.

## Key to symbols

DMC Pearl 8 W5200

|||| Kloster Blocks

|||| Woven Bars

× Cross Stitch

|||| Buttonhole Edging