

Pohutukawa Cross Stitch Borders



The Crisp white, waffle-weave apron and tea-towel are shown off to great advantage with the strongly contrasting borders of pohutukawa flowers.

A wonderful Christmas apron!!

You can purchase or order these through all leading needlecraft retailers throughout New Zealand.

Permin White Kitchen Towel

50x70cm

Waffle Weave with Aida inserts

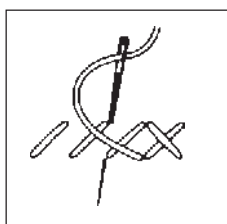
PMT748000 RRP\$11.40

Permin White Apron

50x80cm

Waffle Weave with Aida inserts

PMT748500 RRP\$21.90



DMC Stranded Cotton

351 Coral

817 Japanese Red

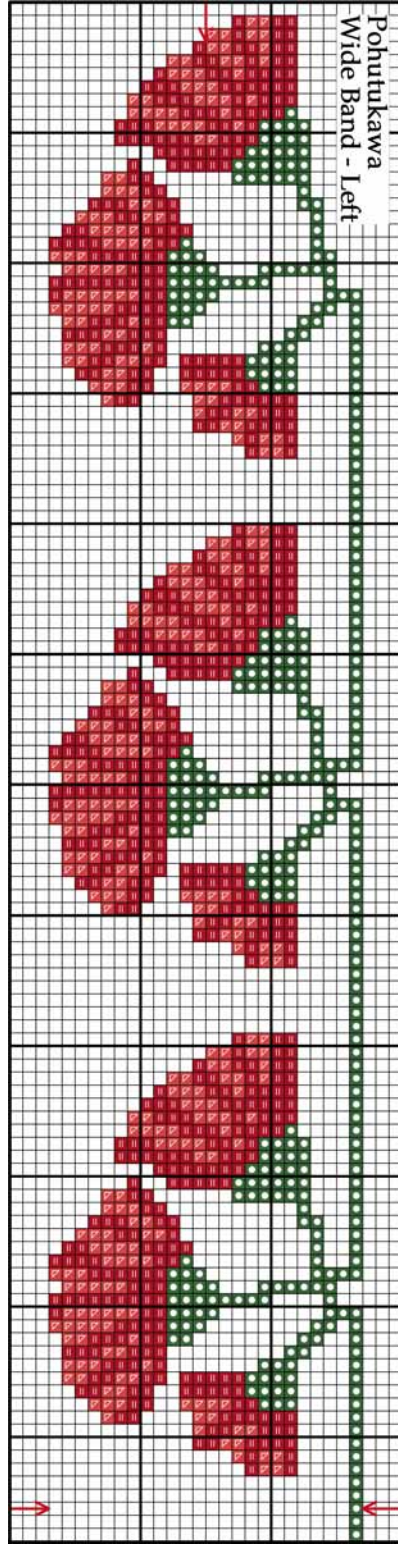
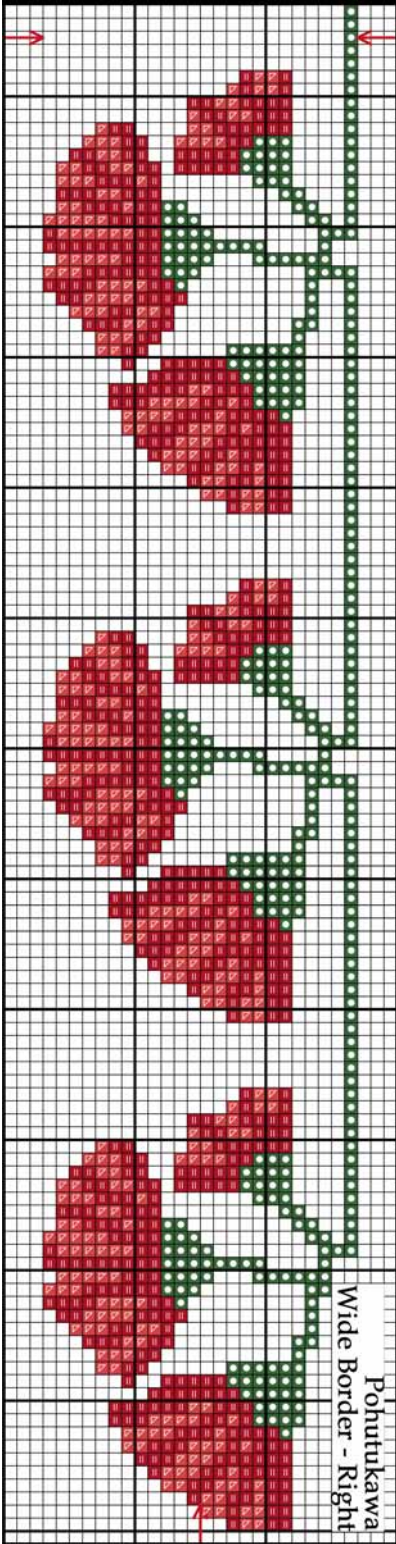
987 Basil Green

Stitch symbols as Cross Stitch with 2 strands

NEW ZEALAND
Creative
 stitch and craft

Spring-Summer October 2005

**Pohutukawa
 Cross Stitch
 Borders**

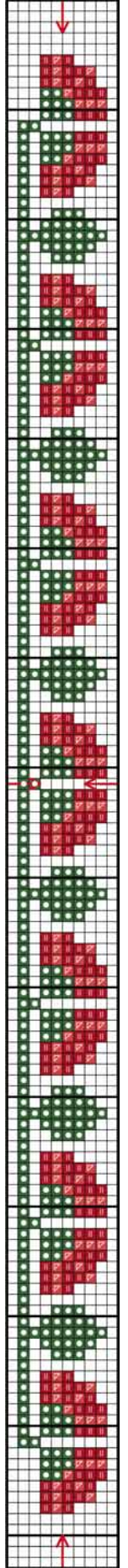
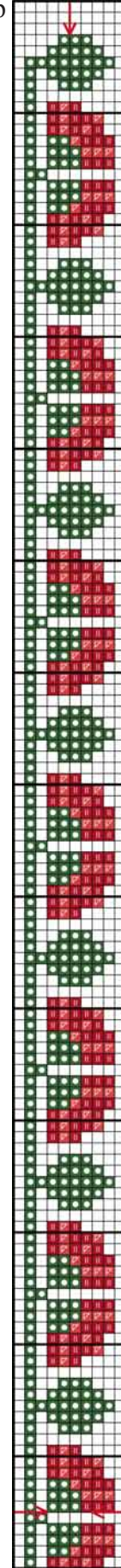
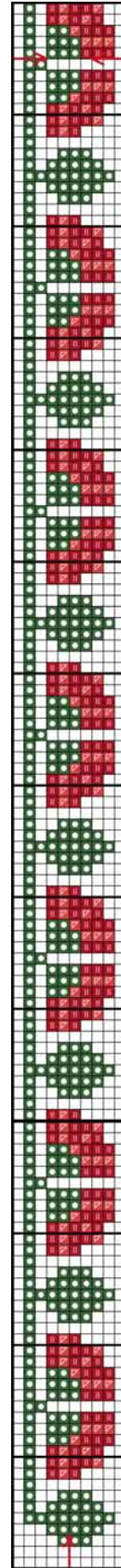


Narrow
 Right

Narrow
 Left

Apron
 Top
 Border

10 row overlap



10 row overlap

DMC Stranded Cotton

-  351 Coral
-  817 Japanese Red
-  987 Basil Green