

NEW ZEALAND Creative stitch and craft Free Chart

Gallery Glass™ Stained Glass Look

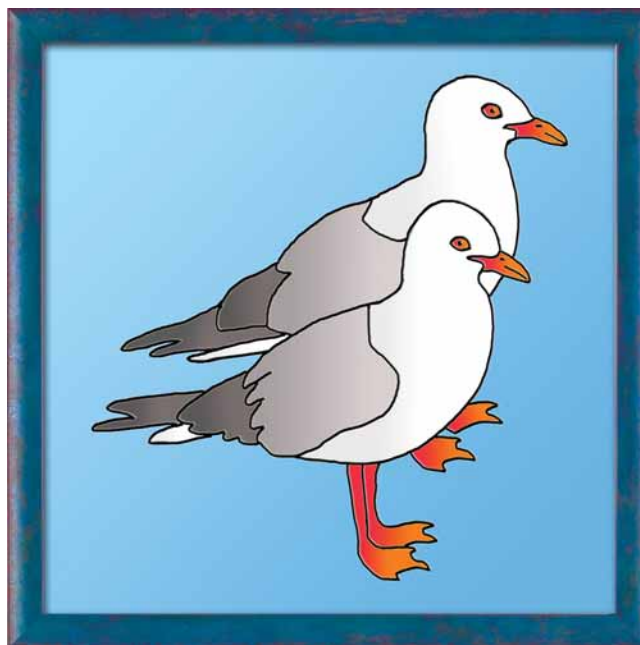
Designed by Madeleine Findley

© CraftCo Limited, 2004

Not for retail sale. May not be republished in any format without the written permission of CraftCo Limited.

Seagulls #6 Gallery Glass Picture

18 x 18cm



The look of beautiful stained glass can be easily created using Gallery Glass® Liquid Leading & Window Paint™.

Materials:

Small ready made picture frame with glass - size of glass 18x18cm or slightly larger. (It doesn't have to be square so long as each dimension is at least 18cm.

Gallery Glass®

PLG-16025 2oz Liquid Leading Black (*contains no lead*)

Window Colour™:

PLG-16001 Crystal Clear

PLG-16002 Snow White

PLG-16011 Blue Diamond

PLG-16018 Charcoal Black

PLG-16428 Dove Grey*

PLG-16429 Pumpkin Orange

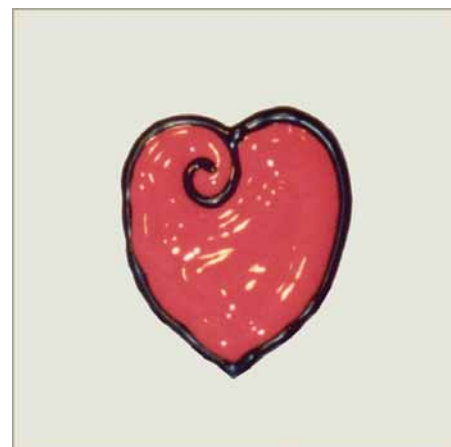
PLG-16005 Orange Poppy

* Substitute Dove Grey if not available with:

PLG-16462 Porcelain Blue

Optional:

PLG-16047 Crackle Medium



Create Design Motifs.

Carefully remove glass from frame. Make sure it is clean before you start and that there are no fingermarks.

Place the pattern for the motif under the glass on your working surface. Hold the inverted bottle of liquid leading like a broom handle. Squeeze leading (3-4mm thick lines) following the line of the pattern.

If it doesn't flow easily, place the bottle in a cup of hot water for a few minutes. Let leading dry for at least 8hrs before painting. You can hurry this up by placing it under the warmth of a halogen lamp (30mins to 1 hour).

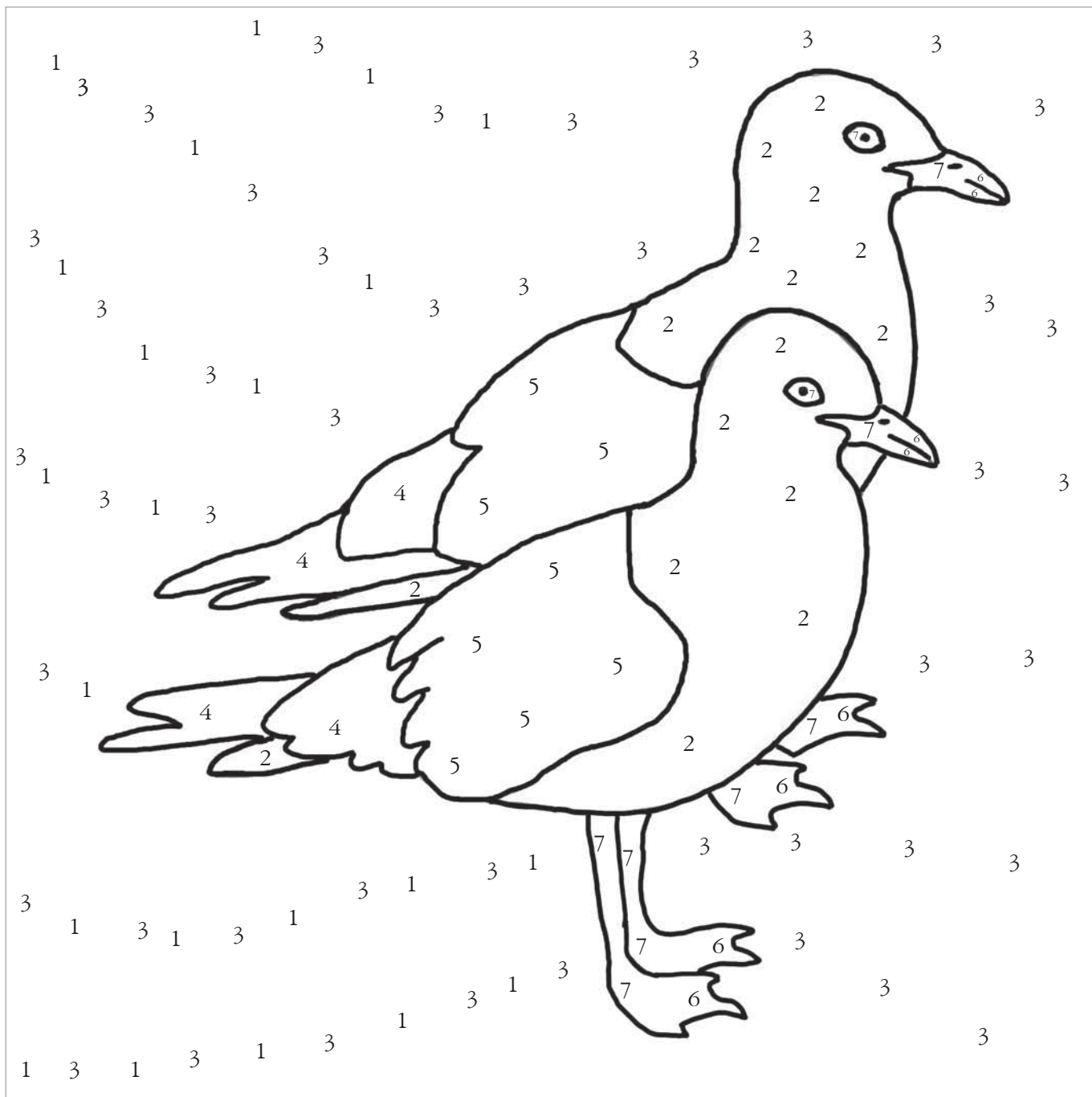
Paint the Motifs.

Do not shake the paint bottles. Window Colour paints need no mixing. If a number of bubbles are visible in a bottle, rap it firmly on a table a few times to remove them. Holding the

Window Colour bottle upside down, squeeze the colour around the edges of the design area. Then fill the centre of the design with paint. Apply paint liberally about the same level as the leading. Be sure the paint fills the corners of the design. Pop any bubbles with a needle or toothpick. Where two colours are used in an area, apply the colours side by side then blend by combing back and forth with a toothpick where the colours meet.

At this stage the paint will look opaque and much lighter than the finished colour. Allow to dry for 24hrs.

To give your project an aged crackled glass look, apply Crackle Medium with a paint brush over dry Window Colour™.



Window Colour™:

- 1 PLG-16001 Crystal Clear
- 2 PLG-16002 Snow White
- 3 PLG-16011 Blue Diamond
- 4 PLG-16018 Charcoal Black
- 5 PLG-16428 Dove Grey*
- 6 PLG-16429 Pumpkin Orange
- 7 PLG-16005 Orange Poppy

* Substitute Dove Grey if not available with:
 PLG-16462 Porcelain Blue

Optional:

PLG-16047 Crackle Medium

Where two colours are used in an area, apply the colours side by side then blend by combing back and forth with a toothpick where the colours meet.

The background combines areas of Blue Diamond and Crystal Clear. As it is such a large area you may find it easier to blend this with a paint brush. Just be careful not to make the layer too thin.

You can create a more shaded look in any area of the design by using some Crystal Clear in amongst the colour.